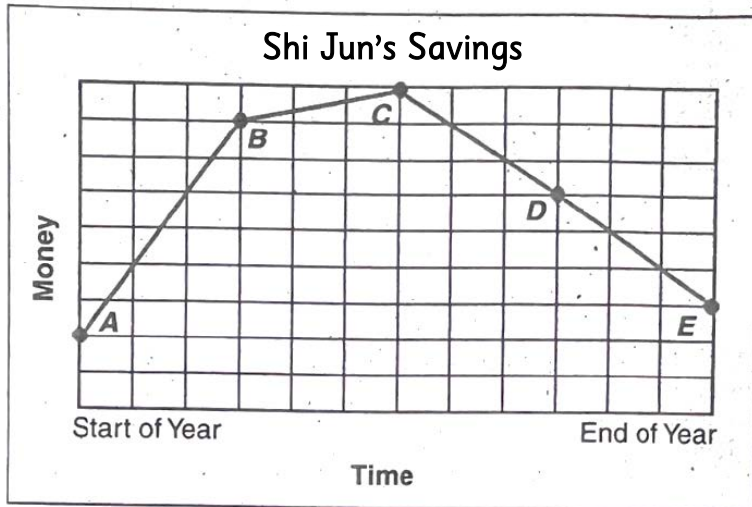


Interpret a Line Graph

The line graph represents the change in Shi Jun's savings for one year. Use the line graph for problems 1-4.



Show your work.

1. Did Shi Jun have more money saved at the start of the year or at the end of the year?

2. Between which two consecutive points did the greatest change occur?

3. Between which three points did Shi Jun's savings decrease at a steady rate?

4. Was Shi Jun adding to his savings or spending his savings between points D and E? Tell how you know.

